

*Our passion:  
Plant nutrition  
and soil health*

elfer<sup>®</sup>

Product catalogue  
CANNABIS/HEMP

**DA**  
**DASA**  
Desarrollos Agroquímicos, S.A.

# elfer<sup>®</sup>



Since 1941, DASA has been providing specialized solutions to nutritional problems for both conventional and organic agriculture. This is the catalog of ELFER products with our most outstanding specific proposals for the cannabis and hemp cultivation. We are manufacturers of more than 400 references with our own laboratory, so we can adapt customized formulations to the needs and countries around the world, complying with applicable regulations.

The professionals of DASA's multidisciplinary technical team will be at your disposal to advise you on the most convenient product for cannabis or hemp, and even if you need other nutritional correctors.

We have a wide range of packaging formats and we can adapt the orders to your needs. Do not hesitate to contact us!







## bIoSoIL



### Plant extract substrate improver

Exclusive plant extract with organic acids whose effect on the soil is to increase the water retention capacity, help unlock nutrients and promote their assimilation. Suitable for organic agriculture.

#### PROPERTIES:

- Improves soil structure and its water retention capacity, relieving water stress.
- Increases the nutrient absorption thanks to its vegetable origin and compatibility with the plant.
- Natural complexing effect that guarantees a better availability of soil nutrients.
- Enhances the microbial activity of the rhizosphere.
- Improves rooting if applied before elfer Bioroot.

**DOSE:** 2-4 ml/l

**Formulation:** Liquid



Fertilizer compatible for use in organic agriculture in accordance with regulation (EC) No. 2021/1165, Annex II (EU) and USDA/NOP-Final rule (EEUU) § 205.601(j)(3).

## bIoRoot



### Root stimulator

Concentrated solution of micronutrients and seaweed extract designed to stimulate the root system growth, improving the plant's nutrient absorption capacity. Suitable for organic agriculture.

#### PROPERTIES:

- Biostimulant effect of the root system thanks to the seaweed extract of *Ascophyllum nodosum*.
- Corrects iron, manganese, boron and molybdenum deficiencies.
- Increases resistance and root development, maximizing the availability and absorption of nutrients and water.
- Improves rooting when applied after elfer Biosoil.

**DOSE:** 2-3 ml/l

**Formulation:** Liquid



Fertilizer compatible for use in organic agriculture in accordance with regulation (EC) No. 2021/1165, Annex II (EU) and USDA/NOP-Final rule (EEUU) § 205.601(j)(6).

## AlGae



### Natural anti-stress

Liquid extract of seaweed (*Ascophyllum nodosum*) highly effective in foliar applications. It contains bioactivators easily assimilated by the plants that help them overcome stress conditions. Suitable for organic agriculture.

#### PROPERTIES:

- Thanks to the synergy between auxins and cytokinins, the plant general performance increases.
- It favors the plant metabolism and improves its resistance in conditions of abiotic stress.
- Reduces the chlorophyll degradation achieving higher final yields.
- We recommend foliar application for best results.

**DOSE:** 2-3 ml/l

**Formulation:** Liquid



Fertilizer compatible for use in organic agriculture in accordance with regulation (EC) No. 2021/1165, Annex II (EU) and USDA/NOP-Final rule (EEUU) § 205.601(j)(3).

## AlGae PLUS



### Concentrated natural anti-stress

Liquid extract of seaweed with high concentration and phytohormones of natural origin. It promotes vegetative and fruit growth and enhances the plant defenses, stimulating its metabolism. Suitable for organic agriculture.

#### PROPERTIES:

- Enhances the general performance of the plant and its vegetative growth thanks to the synergy between auxins and cytokinins.
- Contains organic components that activate the plant's defenses, increasing its resistance to pests and diseases.
- Protects the plant against abiotic stress.
- Increases the synthesis of sugars and photoassimilates.

**DOSE:** 1.5 ml/l

**Formulation:** Liquid



Fertilizer usable in organic plant production according to R (EU) 2018/848 in compliance with the UNE 142500 Standard.

## Grow



Base  
NPK growth

NPK liquid fertilizer (11-5-7) with amino acids and micronutrients. Formulated to cover nitrogen needs in the early stages of vegetative development and boost the plants growth and vigor.

PROPERTIES:

- Increases vegetative growth thanks to its high nitrogen content with micro nutrients.
- Formulated with amino acids that improve plant performance under stress conditions and increase the plant metabolism.
- Designed to promote a balanced development of both the root system and the aerial part.

DOSE: 1.5-2.5 ml/l

Formulation: Liquid

## bL00M



Base  
NPK flowering

NPK liquid fertilizer (5-8-10) enriched with amino acids and micronutrients. It is formulated to meet the nutritional needs of the plants during the flowering phase, increasing the size of the buds.

PROPERTIES:

- Its phosphorus and potassium content stimulates an enhanced plant flowering.
- Its formulation promotes a quality flowering and increases the size of the buds.
- The included amino acids improve plant performance under stress conditions and increase plant metabolism.
- To enhance its effect and the bud growth, we recommend using it together with elfer Supremo or elfer Superbuds.

DOSE: 1.5-2.5 ml/l

Formulation: Liquid

## sUpREm0



CogoMaster

PK fertilizer (15-25) enhanced with seaweed extract and micronutrients. Its formulation enhances the buds growth and development, as well as its organoleptic quality.

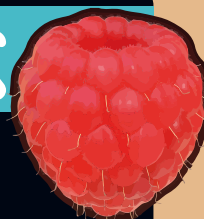
PROPERTIES:

- Stimulates resin production and increases bud fattening, providing highly assimilable phosphorus and potassium.
- Improves the plant's response to stress and prevents nutritional deficiencies at a critical moment in the cycle.
- To achieve a perfect flowering and fattening of the bud, we recommend its application together with elfer Bloom.

DOSE: 2-4 ml/l

Formulation: Liquid

## sUpeRBudS



Bud  
exploder

PK fertilizer (50-33) formulated with the maximum concentration of phosphorus and potassium and enriched with micronutrients. It covers all the nutritional needs during the fattening phase of the bud.

PROPERTIES:

- It produces large buds with a high resin content, improving the flavor, density and final organoleptic quality.
- It helps maintain nutritional balance and prevents deficiencies at a critical moment in the crop.
- To achieve maximum bud growth and improve its effects and efficiency, we recommend its application together with elfer Bloom.

DOSE: 0.5-1.5 g/l

Formulation: Solid





## nUtriToP



### Totipotent growth enhancer

Liquid fertilizer with seaweed extract, micronutrients and amino acids that promotes flowering, improves fruit setting and increases the density and weight of the buds. Suitable for organic agriculture.

**PROPERTIES:**

- Biostimulant effect and abiotic stress protector thanks to the Ascophyllum nodosum seaweed extract.
- Its plant origin amino acids content improves the plant growth and the trichomes filling.
- It provides a wide variety of easily absorbable micronutrients, allowing good development of the plant and top quality buds.

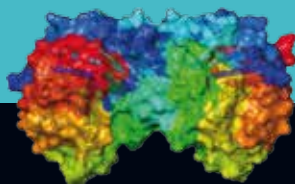
**DOSE:** 2.5-4 ml/l

**Formulation:** Liquid



Fertilizer compatible for use in organic agriculture in accordance with regulation (EC) No. 2021/1165, Annex II (EU) and USDA/NOP-Final rule (EEUU) § 205.601(j)(6).

## N-ZymE



### Substrate purifying enzymes

Specific formulation with substrate cleaning enzymes. Used in the final phase of the cycle it cleans the substrate from dead roots and remaining nutrients, improving the organoleptic quality of the bud.

**PROPERTIES:**

- The enzymes promotes the decomposition of cellulose residues and releases the substrate from dead roots.
- It increases the quality and final flavor of the bud.
- It improves the biological balance by stimulating the activity of microorganisms present in the soil.
- Recommended to dissolve and eliminate the accumulation of salts due to excess fertilization.

**DOSE:** 2 ml/l

**Formulation:** Liquid

## fUlvAte Ca



### Calcium corrector

Complexed calcium solution designed to improve the calcium mobility in the plant during the bud fattening phase. It improves the bud firmness and the plant structure, enhancing its growth and stability. Suitable for organic agriculture.

**PROPERTIES:**

- Improves the firmness of the buds and reinforces the structure of the plant, giving it more elasticity and resistance.
- Participates in the degradation of soil organic matter, enhancing the assimilation of nutrients by the plant.
- Promotes the synthesis of proteins and vitamins, regulating cells and providing stability to the plant and more resistance to external attacks by diseases and pests.

**DOSE:** 2-3 ml/l

**Formulation:** Liquid



Fertilizer compatible for use in organic agriculture in accordance with regulation (EC) No. 2021/1165, Annex II (EU).

## fUlvAte Mg



### Manganese corrector

Magnesium solution designed to activate the plant metabolism and promote the sugar transport and accumulation in the buds. Its application improves the plant photosynthetic capacity and corrects magnesium deficiencies. Suitable for organic agriculture.

**PROPERTIES:**

- It improves the vegetative growth of the plant as it increases photosynthetic activity.
- The magnesium enhances the plant capacity to generate carbohydrates, improving the bud quality.
- It also participates in enzymatic and protein synthesis processes, working together with calcium.

**DOSE:** 2-3 ml/l

**Formulation:** Liquid



CC issued by KIWA BCS, product compatible with NOP regulation for use in organic crops as crop fertilizer.

## mIcrOs

### Chelated micronutrients



High quality solid mixture with iron, manganese, boron, zinc, copper and molybdenum designed to correct and maintain the optimum level of micronutrients in the plant. Suitable for organic agriculture.

#### PROPERTIES:

- It corrects a wide variety of nutritional deficiencies.
- It increases the metabolic and enzymatic activity of plants, reaching their maximum productive potential.
- Easily assimilable and soluble thanks to the EDTA and HGA, which provide stability to micronutrients and promote the assimilation of sugars.

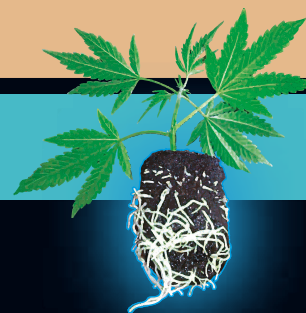
DOSE: 2-2.5 g/l

Formulation: Solid



Fertilizer compatible for use in organic agriculture in accordance with regulation (EC) No. 2021/1165, Annex II (EU).

## CLONE



### Cloning gel

Liquid seaweed extract formulated to stimulate the rooting of new cuttings. It contains the essential micronutrients to guarantee and enhance the viability of the cuttings, as well as osmoprotectors, oligosaccharides and antioxidants.

#### PROPERTIES:

- The Ascophyllum nodosum extract promotes the formation of new roots.
- With a minimum dose, it promotes the propagation of cuttings with a high probability of success.
- Its gel texture facilitates the application and protects the cuttings from external attacks.

DOSE: Immersion

Formulation: Gel

## T34 Biocontrol®

### Biofungicide Trichoderma



Innovative and highly concentrated biofungicide that controls crop diseases, protects plants from pathogens and improves their productivity. It acts against fungal diseases and parasitic nematodes, protecting the root system and enhancing its growth.

#### PROPERTIES:

- T34 has a highly persistent biofungicide effect that combats various groups of fungi, both in leaves and in the soil.
- It solubilizes nutrients, allowing greater absorption.
- It adapts to any soil, substrate and climate.



DOSE: 10 g/m<sup>3</sup>

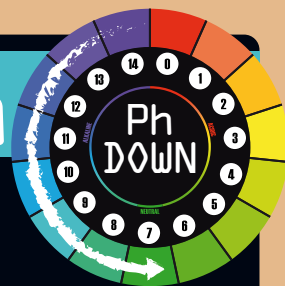
Formulation: Solid



OMRI confirms the compatibility of this product for use in organic farming in accordance with the USDA National Organic Program regulations if requirements of 205.206 (e) are met, which requires the use of preventive, mechanical, physical, and other pest, weed, and disease management practices. ECOCERT confirms the compatibility of this product for use in organic farming in accordance with the regulation (CE) n°834/2007 and (CE) n°889/2008.

## pH dOwN

### pH - regulator

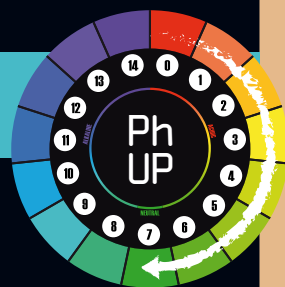


pH regulator designed to lower the pH in basic solutions. Its application unblocks nutrients from the soil and acidifies it.

DOSE: 0.6 ml/l l

## pH Up

### pH + regulator



pH regulator designed to raise the pH in acid solutions. Its application increases the pH and improves the absorption of various nutrients such as phosphorus, potassium, boron and molybdenum.

DOSE: 0.5 ml/10 l

Formulation: Liquid



# INDOOR grow calendar

## ELFER CANNA Products range



PHASE	GROWTH				FLOWERING							
	WEEK	1	2	3	4	5	6	7	8	9	10	
LIGHT		18 h	12 h				12 h					
bIoRoot	ECO	2 - 3 ml/liter Root stimulator										
bIoSoIL	ECO	2 - 4 ml/liter Plant extract substrate improver							2 - 4 ml/l Substrate improver			
Grow		1.5 - 2.5 ml/liter Base NPK growth										
mIcr0s	ECO	2 - 2.5 g/liter Chelated micronutrients										
T34 Biocontrol <sup>a</sup>	ECO	Cycle beginning: 10 g/m <sup>3</sup> de substrate Monthly maintenance: 0.01 g/liter Biofungicide Trichoderma										
nUtriToP	ECO	2.5 - 4 ml/liter Totipotent growth enhancer										
bL00m					1.5 - 2.5 ml/liter Base NPK flowering							
sUpREm0 o sUpeRBudS								sUpREm0 2 - 4 ml/liter sUpeRBudS 0.5 - 1.5 g/liter Bud exploder				
AlGae o AlGae Plus	ECO	AlGae 2 - 3 ml/liter AlGae Plus 1.5 ml/liter	Natural anti-stress									
fUlVate Ca	ECO	2 - 3 ml/liter Calcium corrector										
fUlVate Mg	ECO	2 - 3 ml/liter Magnesium corrector										
N-ZymE								2 ml/liter Substrate purifying enzymes		WATER		

These are indicative doses. It is the responsibility of the consumer to increase or decrease depending on environmental conditions, the vegetative state of the plant and its needs.



# OUTDOOR grow calendar

## ELFER CANNA Products range



PHASE	GROWTH				FLOWERING				
	MONTH	MARCH	APRIL	MAY	JUNE	JULY	AUGUST	SEPTEMBER	OCTOBER
bIoRoot	ECO	2 - 3 ml/liter Root stimulator							
bIoSoIL	ECO	2 - 4 ml/liter Plant extract substrate improver						2 - 4 ml/liter Plant extract substrate improver	
Grow		1.5 - 2.5 ml/liter Base NPK growth							
mIcr0s	ECO	2 - 2.5 g/liter Chelated micronutrients							
T34 Biocontrol <sup>a</sup>	ECO	Cycle beginning: 10 g/m <sup>3</sup> de substrate Monthly maintenance: 0.01 g/liter Biofungicide Trichoderma							
nUtriToP	ECO	2.5 - 4 ml/liter Totipotent growth enhancer							
bL00m						1.5 - 2.5 ml/liter Base NPK flowering			
sUpREm0 o sUpeRBudS							sUpREm0 2 - 4 ml/liter sUpeRBudS 0.5 - 1.5 g/liter Bud exploder		
AlGae o AlGae Plus	ECO	AlGae 2 - 3 ml/liter AlGae Plus 1.5 ml/liter	Natural anti-stress						
fUlVate Ca	ECO	2 - 3 ml/liter Calcium corrector							
fUlVate Mg	ECO	2 - 3 ml/liter Magnesium corrector							
N-ZymE								2 ml/liter Substrate purifying enzymes	

JUST WATER & ELFER N-ZYME

These are indicative doses. It is the responsibility of the consumer to increase or decrease depending on environmental conditions, the vegetative state of the plant and its needs.







Avda. de la Carrera, s/n.  
E25139 MENARGUENS (Lleida) ESPAÑA  
T: +34 973 18 10 34 / 973 18 10 36  
dasaelfer@dasaelfer.com  
[www.dasaelfer.com](http://www.dasaelfer.com)

Sistemas de Gestión de Calidad  
y Medioambiente certificados  
anualmente por:

